


| Qty. | Description |
|------|--|
| 1 | <p data-bbox="199 338 563 367">CM 3-6 O-R-I-E-AQQE C-A-A-N</p> <div data-bbox="292 454 504 584">  </div> <p data-bbox="199 660 469 689">Product No.: 98482176</p> <p data-bbox="199 719 1453 824">Compact, reliable, horizontal, multistage, end-suction centrifugal pump with axial suction port and radial discharge port. The pump is self-priming and can create a suction lift of up to 8 metres. Pump materials in contact with the liquid are in stainless steel. The mechanical shaft seal is a special designed, unbalanced O-ring seal. Pipework connection is via internal Whitworth pipe threads, Rp (ISO 7/1).</p> <p data-bbox="199 862 1094 891">The pump is fitted with a 1-phase, foot-mounted, fan-cooled asynchronous motor.</p> <p data-bbox="199 952 316 981">Controls:</p> <p data-bbox="199 981 638 1010">Frequency converter: NONE</p> <p data-bbox="199 1041 288 1070">Liquid:</p> <p data-bbox="199 1070 638 1099">Pumped liquid: Water</p> <p data-bbox="199 1099 671 1128">Liquid temperature range: 0 .. 60 °C</p> <p data-bbox="199 1128 632 1158">Selected liquid temperature: 20 °C</p> <p data-bbox="199 1158 699 1187">Density: 998.2 kg/m³</p> <p data-bbox="199 1218 328 1247">Technical:</p> <p data-bbox="199 1247 820 1276">Pump speed on which pump data are based: 2900 rpm</p> <p data-bbox="199 1276 638 1305">Rated flow: 3 m³/h</p> <p data-bbox="199 1305 644 1335">Rated head: 42.1 m</p> <p data-bbox="199 1335 638 1364">Code for shaft seal: AQQE</p> <p data-bbox="199 1364 764 1393">Curve tolerance: ISO9906:2012 3B</p> <p data-bbox="199 1393 608 1422">Self priming: 8 m</p> <p data-bbox="199 1453 320 1482">Materials:</p> <p data-bbox="199 1482 727 1570">Pump housing: Stainless steel EN 1.4301 AISI 304</p> <p data-bbox="199 1570 727 1657">Impeller: Stainless steel EN 1.4301 AISI 304</p> <p data-bbox="199 1688 344 1718">Installation:</p> <p data-bbox="199 1718 694 1747">Range of ambient temperature: -20 .. 55 °C</p> <p data-bbox="199 1747 638 1776">Maximum operating pressure: 16 bar</p> <p data-bbox="199 1776 727 1839">Max pressure at stated temp: 16 bar / 60 °C 16 bar / 60 °C</p> <p data-bbox="199 1839 600 1868">Type of connection: Rp</p> <p data-bbox="199 1868 635 1897">Size of inlet connection: 1 inch</p> <p data-bbox="199 1897 635 1926">Size of outlet connection: 1 inch</p> <p data-bbox="199 1926 596 1955">Outlet position: 12</p> <p data-bbox="199 1986 381 2016">Electrical data:</p> <p data-bbox="199 2016 608 2045">Motor standard: IEC</p> <p data-bbox="199 2045 612 2074">Frame size: 80A</p> <p data-bbox="199 2074 659 2103">Rated power - P2: 0.67 kW</p> |



Company name:

Created by:

Phone:

Date:

29/04/2020

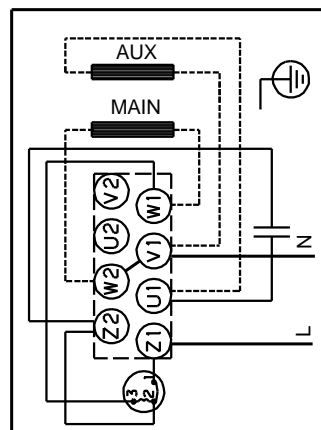
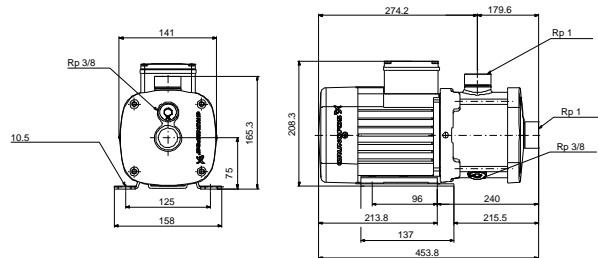
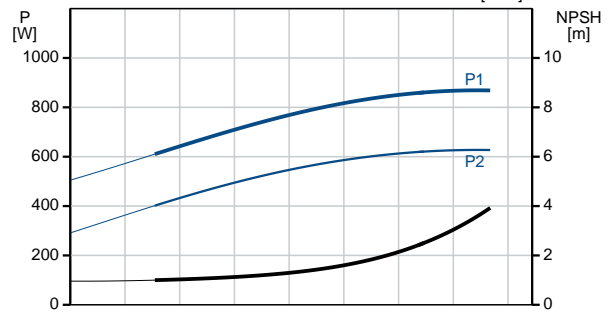
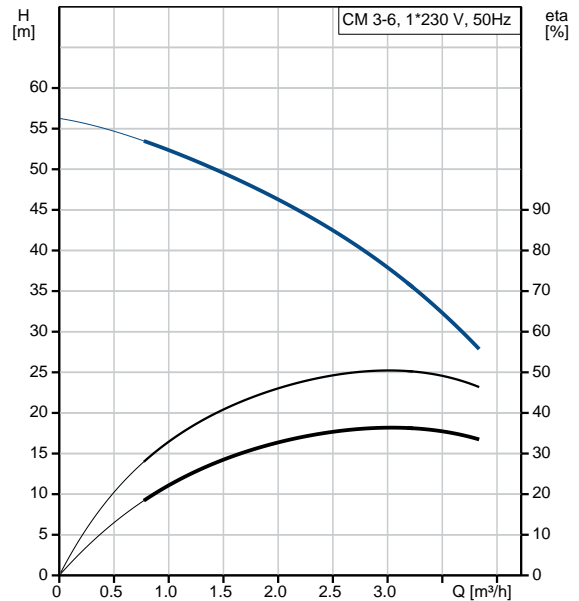
Qty. Description

Mains frequency: 50 Hz
Suitable for 50/60 Hz: N
Phases: 1
Rated voltage: 220-240 V
Service factor: 1.00
Rated current: 4.4-4.0 A
Starting current: 390-390 %
Rated speed: 2720-2800 rpm
Enclosure class (IEC 34-5): IP55
Insulation class (IEC 85): F
Built-in motor protection: PTO

Others:

Terminal box position: 12
Minimum efficiency index, MEI $\eta_{\%}$: 0.7
Net weight: 16.2 kg
Gross weight: 18.7 kg
Approvals: CE,WRAS,ACS,TR,EAC
Country of origin: HU
Custom tariff no.: 84137075

| Description | Value |
|--|--|
| General information: | |
| Product name: | CM 3-6 O-R-I-E-AQQE C-A-A-N |
| Product No: | 98482176 |
| EAN number: | 5711495880750 5711495880750 |
| Price: | 749,00 EUR |
| Technical: | |
| Pump speed on which pump data are based: | 2900 rpm |
| Rated flow: | 3 m ³ /h |
| Rated head: | 42.1 m |
| Impellers: | 6 |
| Code for shaft seal: | AQQE |
| Curve tolerance: | ISO9906:2012 3B |
| Pump version: | O |
| Model: | A |
| Self priming: | 8 m |
| Materials: | |
| Pump housing: | Stainless steel EN 1.4301 AISI 304 |
| Impeller: | Stainless steel EN 1.4301 AISI 304 |
| Material code: | I |
| Code for rubber: | E |
| Installation: | |
| Range of ambient temperature: | -20 .. 55 °C |
| Maximum operating pressure: | 16 bar |
| Max pressure at stated temp: | 16 bar / 60 °C 16 bar / 60 °C |
| Type of connection: | Rp |
| Size of inlet connection: | 1 inch |
| Size of outlet connection: | 1 inch |
| Outlet position: | 12 |
| Connect code: | R |
| Liquid: | |
| Pumped liquid: | Water |
| Liquid temperature range: | 0 .. 60 °C |
| Selected liquid temperature: | 20 °C |
| Density: | 998.2 kg/m ³ |
| Electrical data: | |
| Motor standard: | IEC |
| Frame size: | 80A |
| Rated power - P2: | 0.67 kW |
| Mains frequency: | 50 Hz |
| Suitable for 50/60 Hz: | N |
| Phases: | 1 |
| Rated voltage: | 220-240 V |
| Service factor: | 1.00 |
| Rated current: | 4.4-4.0 A |
| Starting current: | 390-390 % |
| Rated speed: | 2720-2800 rpm |
| Enclosure class (IEC 34-5): | IP55 |
| Insulation class (IEC 85): | F |
| Built-in motor protection: | PTO |
| Controls: | |
| Frequency converter: | NONE |





Company name:

Created by:

Phone:

Date:

29/04/2020

| Description | Value |
|----------------------------------|--------------------|
| Others: | |
| Terminal box position: | 12 |
| Minimum efficiency index, MEI %: | 0.7 |
| Net weight: | 16.2 kg |
| Gross weight: | 18.7 kg |
| Approvals: | CE,WRAS,ACS,TR,EAC |
| Country of origin: | HU |
| Custom tariff no.: | 84137075 |