


Qty.	Description
1	<p data-bbox="199 336 558 369">CM 3-5 O-R-I-E-AQQE C-A-A-N</p> <div data-bbox="287 448 502 582" style="text-align: center;">  </div> <p data-bbox="199 660 470 683">Product No.: 98482175</p> <p data-bbox="199 716 1452 817">Compact, reliable, horizontal, multistage, end-suction centrifugal pump with axial suction port and radial discharge port. The pump is self-priming and can create a suction lift of up to 8 metres. Pump materials in contact with the liquid are in stainless steel. The mechanical shaft seal is a special designed, unbalanced O-ring seal. Pipework connection is via internal Whitworth pipe threads, Rp (ISO 7/1).</p> <p data-bbox="199 862 1093 884">The pump is fitted with a 1-phase, foot-mounted, fan-cooled asynchronous motor.</p> <p data-bbox="199 952 319 974">Controls:</p> <p data-bbox="199 981 638 1008">Frequency converter: NONE</p> <p data-bbox="199 1041 287 1064">Liquid:</p> <p data-bbox="199 1070 638 1097">Pumped liquid: Water</p> <p data-bbox="199 1104 670 1131">Liquid temperature range: 0 .. 60 °C</p> <p data-bbox="199 1137 630 1164">Selected liquid temperature: 20 °C</p> <p data-bbox="199 1171 702 1198">Density: 998.2 kg/m³</p> <p data-bbox="199 1220 327 1243">Technical:</p> <p data-bbox="199 1249 821 1276">Pump speed on which pump data are based: 2900 rpm</p> <p data-bbox="199 1283 638 1310">Rated flow: 3 m³/h</p> <p data-bbox="199 1317 654 1344">Rated head: 34.89 m</p> <p data-bbox="199 1350 638 1377">Code for shaft seal: AQQE</p> <p data-bbox="199 1384 766 1411">Curve tolerance: ISO9906:2012 3B</p> <p data-bbox="199 1417 606 1444">Self priming: 8 m</p> <p data-bbox="199 1467 319 1489">Materials:</p> <p data-bbox="199 1496 726 1579">Pump housing: Stainless steel EN 1.4301 AISI 304</p> <p data-bbox="199 1585 726 1668">Impeller: Stainless steel EN 1.4301 AISI 304</p> <p data-bbox="199 1691 343 1713">Installation:</p> <p data-bbox="199 1720 694 1747">Range of ambient temperature: -20 .. 55 °C</p> <p data-bbox="199 1753 638 1780">Maximum operating pressure: 16 bar</p> <p data-bbox="199 1787 726 1848">Max pressure at stated temp: 16 bar / 60 °C 16 bar / 60 °C</p> <p data-bbox="199 1854 598 1881">Type of connection: Rp</p> <p data-bbox="199 1888 630 1915">Size of inlet connection: 1 inch</p> <p data-bbox="199 1921 630 1948">Size of outlet connection: 1 inch</p> <p data-bbox="199 1955 598 1982">Outlet position: 12</p> <p data-bbox="199 2004 383 2027">Electrical data:</p> <p data-bbox="199 2033 606 2060">Motor standard: IEC</p> <p data-bbox="199 2067 606 2094">Frame size: 71B</p> <p data-bbox="199 2101 646 2128">Rated power - P2: 0.5 kW</p>



Company name:

Created by:

Phone:

Date:

29/04/2020

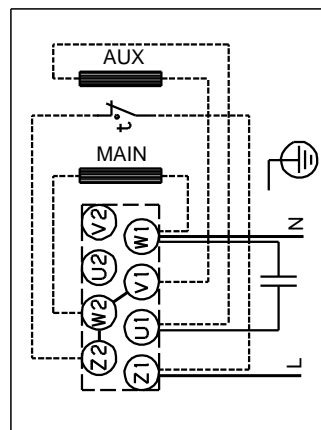
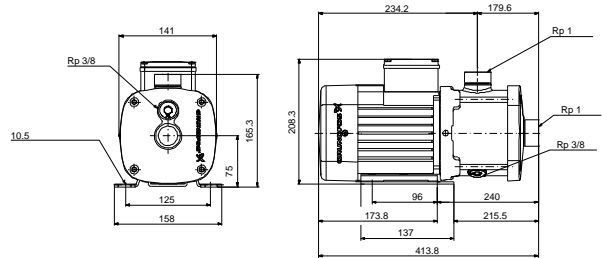
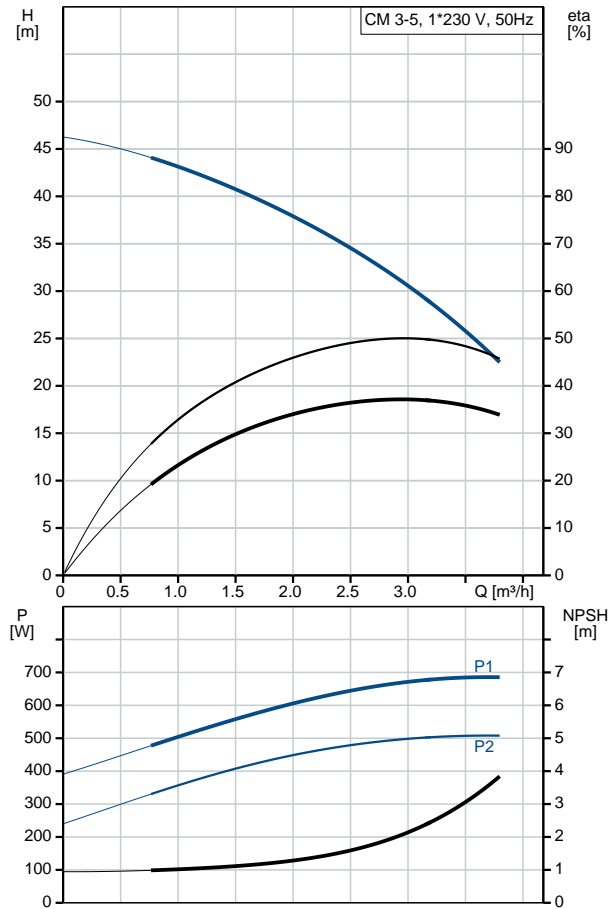
Qty. Description

Mains frequency: 50 Hz
Suitable for 50/60 Hz: N
Phases: 1
Rated voltage: 220-240 V
Service factor: 1.00
Rated current: 3.1-2.8 A
Starting current: 530-530 %
Rated speed: 2730-2740 rpm
Enclosure class (IEC 34-5): IP55
Insulation class (IEC 85): F
Built-in motor protection: PTO

Others:

Terminal box position: 12
Minimum efficiency index, MEI $\eta_{\%}$: 0.7
Net weight: 14.5 kg
Gross weight: 17 kg
Approvals: CE,WRAS,ACS,TR,EAC
Country of origin: HU
Custom tariff no.: 84137075

Description	Value
General information:	
Product name:	CM 3-5 O-R-I-E-AQQE C-A-A-N
Product No:	98482175
EAN number:	5711495880743 5711495880743
Price:	676,00 EUR
Technical:	
Pump speed on which pump data are based:	2900 rpm
Rated flow:	3 m³/h
Rated head:	34.89 m
Impellers:	5
Code for shaft seal:	AQQE
Curve tolerance:	ISO9906:2012 3B
Pump version:	O
Model:	A
Self priming:	8 m
Materials:	
Pump housing:	Stainless steel EN 1.4301 AISI 304
Impeller:	Stainless steel EN 1.4301 AISI 304
Material code:	I
Code for rubber:	E
Installation:	
Range of ambient temperature:	-20 .. 55 °C
Maximum operating pressure:	16 bar
Max pressure at stated temp:	16 bar / 60 °C 16 bar / 60 °C
Type of connection:	Rp
Size of inlet connection:	1 inch
Size of outlet connection:	1 inch
Outlet position:	12
Connect code:	R
Liquid:	
Pumped liquid:	Water
Liquid temperature range:	0 .. 60 °C
Selected liquid temperature:	20 °C
Density:	998.2 kg/m³
Electrical data:	
Motor standard:	IEC
Frame size:	71B
Rated power - P2:	0.5 kW
Mains frequency:	50 Hz
Suitable for 50/60 Hz:	N
Phases:	1
Rated voltage:	220-240 V
Service factor:	1.00
Rated current:	3.1-2.8 A
Starting current:	530-530 %
Rated speed:	2730-2740 rpm
Enclosure class (IEC 34-5):	IP55
Insulation class (IEC 85):	F
Built-in motor protection:	PTO
Controls:	
Frequency converter:	NONE





Company name:

Created by:

Phone:

Date:

29/04/2020

Description	Value
Others:	
Terminal box position:	12
Minimum efficiency index, MEI %:	0.7
Net weight:	14.5 kg
Gross weight:	17 kg
Approvals:	CE,WRAS,ACS,TR,EAC
Country of origin:	HU
Custom tariff no.:	84137075