

Qty. Description

1 **SEG.40.12.E.2.50B**



Note! Product picture may differ from actual product

Product No.: [96878510](#)

Non-self-priming, single-stage, centrifugal pump with horizontal discharge port, specifically designed for lift and pumping of wastewater containing discharge from toilets. The pump is equipped with a grinder system that grinds destructible solids into small pieces so that they can be led away through pipes of a relatively small diameter.

The surface of the pump is smooth to prevent dirt and impurities from sticking to the pump. A corrosion resistant stainless steel clamp is securing the motor to the pump housing and allow for ease of service of the pump.

For maintaining maximum pump efficiency during the pump life, a SmartTrim system allows easy adjustment of impeller clearance.

This AUTOADAPT version incorporates a controller, sensors and motor-protection, it only needs to be connected to the mains supply. The pump adapts automatically to the conditions in the pit.

Features of the AUTOADAPT function:

- pump alternation
- alarm relay output
- random start delay in case of general power shutdown
- self-calibration after each pump cycle
- anti-seizing system
- after-run function.

Controls:

Moisture sensor: without moisture sensors

AUTOADAPT: YES

Liquid:

Pumped liquid: Any Newtonian liquid

Liquid temperature range: 0 .. 40 °C

Density: 998.2 kg/m³

Technical:

Type of impeller: GRINDER SYSTEM

Primary shaft seal: SIC/SIC

Secondary shaft seal: LIPSEAL

Curve tolerance: ISO9906:2012 3B2

Materials:

Pump housing: Cast iron
EN-GJL-200

Impeller: Cast iron
EN-GJL-200

Installation:

Maximum ambient temperature: 40 °C

Maximum operating pressure: 6 bar

Flange standard: DIN

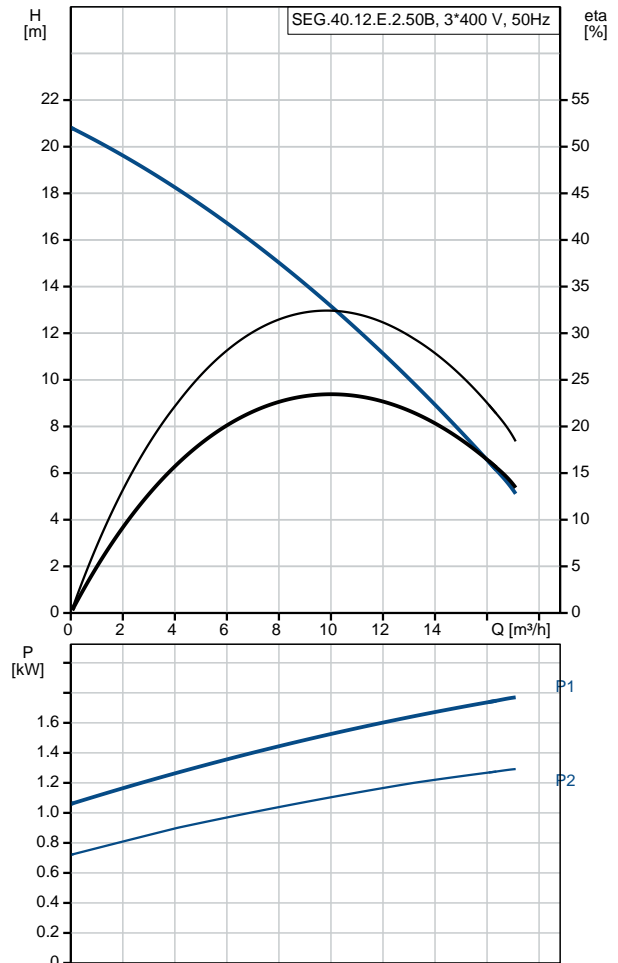
Pipework connection: DN40/50

Pump outlet: DN 40

Pressure rating: PN10

| Qty. | Description |
|------|---|
| | Maximum installation depth: 10 m Auto-coupling: 96076063 Electrical data: Power input - P1: 1.8 kW Rated power - P2: 1.2 kW Mains frequency: 50 Hz Rated voltage: 3 x 400-415 V Voltage tolerance: +6/-10 % Max starts per. hour: 30 Rated current: 3.2/3.2 A Starting current: 21 A Rated current at no load: 1.9 A Cos phi - power factor: 0.81 Cos phi - p.f. at 3/4 load: 0.72 Cos phi - p.f. at 1/2 load: 0.58 Rated speed: 2750 rpm Moment of inertia: 0.0038 kg m ² Motor efficiency at full load: 73 % Motor efficiency at 3/4 load: 71 % Motor efficiency at 1/2 load: 66 % Number of poles: 2 Start. method: direct-on-line Enclosure class (IEC 34-5): IP68 Insulation class (IEC 85): F Explosion proof: no Length of cable: 10 m Cable type: LYNIFLEX Type of cable plug: NO PLUG Others: Net weight: 46.5 kg Danish VVS No.: 391344131 Swedish RSK No.: 5885985 Finnish LVI No.: 4836109 Norwegian NRF no.: 9045564 |

| Description | Value |
|--------------------------------|--------------------------|
| General information: | |
| Product name: | SEG.40.12.E.2.50B |
| Product No: | 96878510 |
| EAN number: | 5700312551232 |
| | 5700312551232 |
| Technical: | |
| Max flow: | 17.1 m ³ /h |
| Head max: | 20.7 m |
| Type of impeller: | GRINDER SYSTEM |
| Primary shaft seal: | SIC/SIC |
| Secondary shaft seal: | LIPSEAL |
| Curve tolerance: | ISO9906:2012 3B2 |
| Materials: | |
| Pump housing: | Cast iron |
| | EN-GJL-200 |
| Impeller: | Cast iron |
| | EN-GJL-200 |
| Installation: | |
| Maximum ambient temperature: | 40 °C |
| Maximum operating pressure: | 6 bar |
| Flange standard: | DIN |
| Pipework connection: | DN40/50 |
| Pump outlet: | DN 40 |
| Pressure rating: | PN10 |
| Maximum installation depth: | 10 m |
| Inst dry/wet: | SUBMERGED |
| Auto-coupling: | 96076063 |
| Liquid: | |
| Pumped liquid: | Any Newtonian liquid |
| Liquid temperature range: | 0 .. 40 °C |
| Density: | 998.2 kg/m ³ |
| Electrical data: | |
| Power input - P1: | 1.8 kW |
| Rated power - P2: | 1.2 kW |
| Mains frequency: | 50 Hz |
| Rated voltage: | 3 x 400-415 V |
| Voltage tolerance: | +6/-10 % |
| Max starts per. hour: | 30 |
| Rated current: | 3.2/3.2 A |
| Starting current: | 21 A |
| Rated current at no load: | 1.9 A |
| Cos phi - power factor: | 0.81 |
| Cos phi - p.f. at 3/4 load: | 0.72 |
| Cos phi - p.f. at 1/2 load: | 0.58 |
| Rated speed: | 2750 rpm |
| Moment of inertia: | 0.0038 kg m ² |
| Motor efficiency at full load: | 73 % |
| Motor efficiency at 3/4 load: | 71 % |
| Motor efficiency at 1/2 load: | 66 % |
| Number of poles: | 2 |
| Start. method: | direct-on-line |
| Enclosure class (IEC 34-5): | IP68 |
| Insulation class (IEC 85): | F |
| Explosion proof: | no |
| Motor protec: | THERMAL SWITCH |
| Thermal protec: | internal |
| Length of cable: | 10 m |
| Cable type: | LYNIFLEX |





Company name:

Created by:

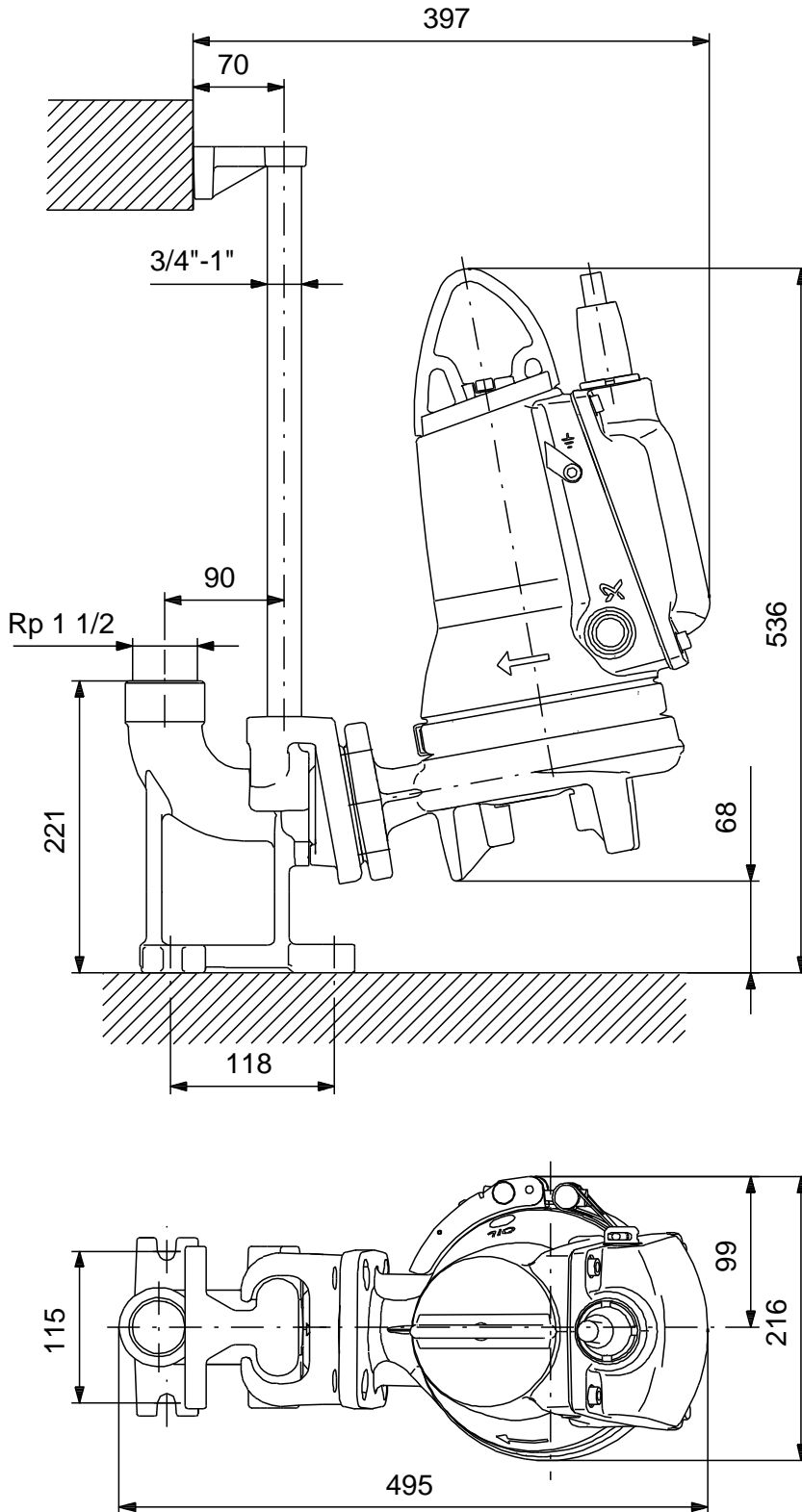
Phone:

Date:

04/04/2020

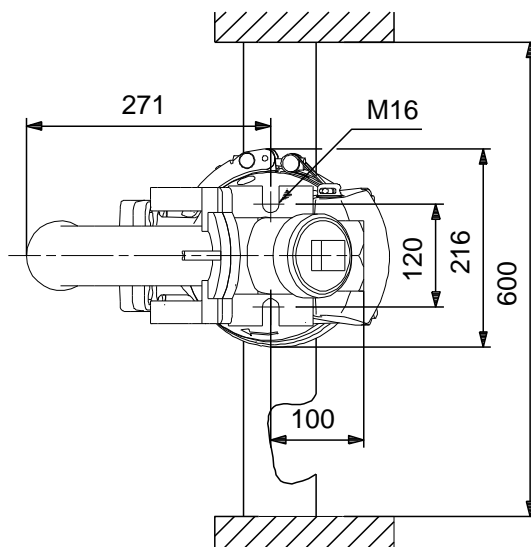
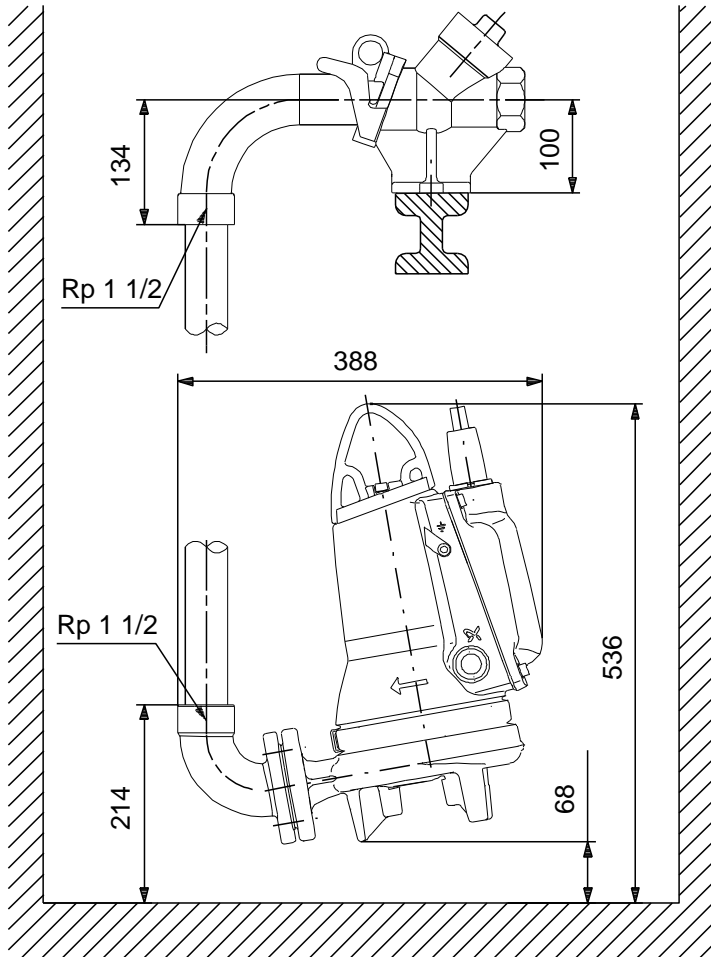
| Description | Value |
|---------------------|--------------------------|
| Type of cable plug: | NO PLUG |
| Controls: | |
| Control box: | not included |
| Additional I/O: | Build in |
| Moisture sensor: | without moisture sensors |
| AUTOADAPT: | YES |
| Others: | |
| Net weight: | 46.5 kg |
| Danish VVS No.: | 391344131 |
| Swedish RSK No.: | 5885985 |
| Finnish LVI No.: | 4836109 |
| Norwegian NRF no.: | 9045564 |

96878510 SEG.40.12.E.2.50B 50 Hz



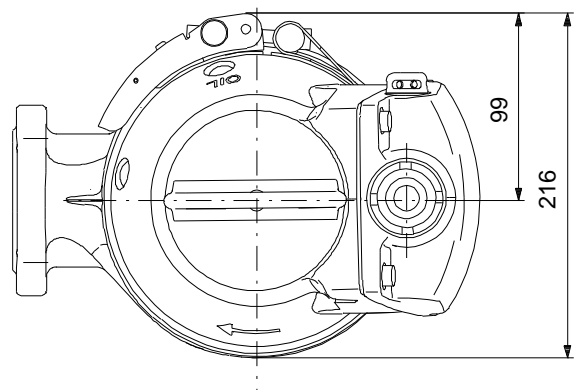
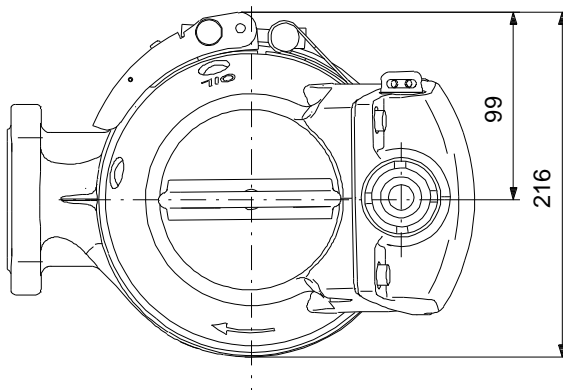
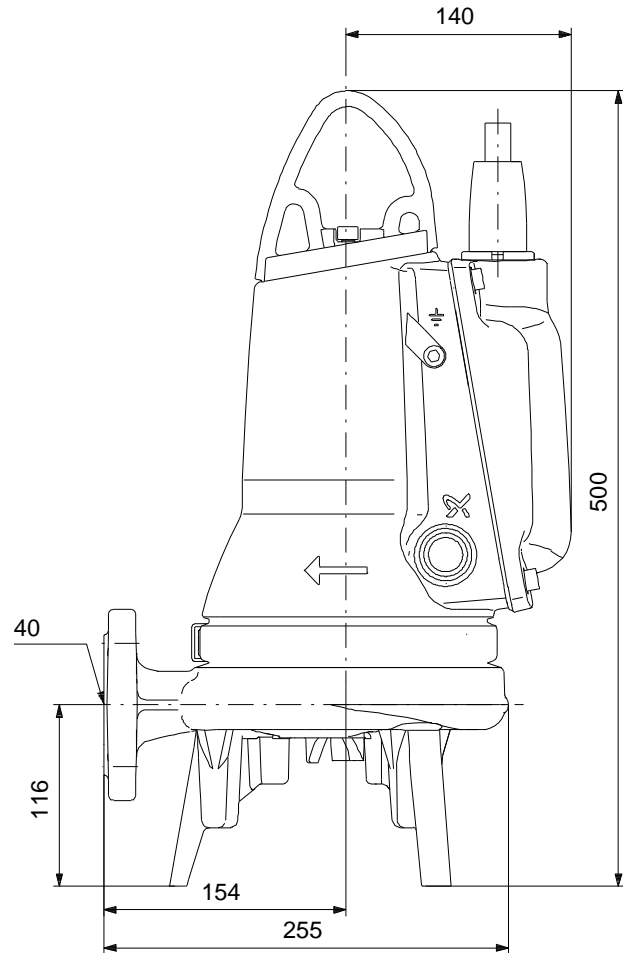
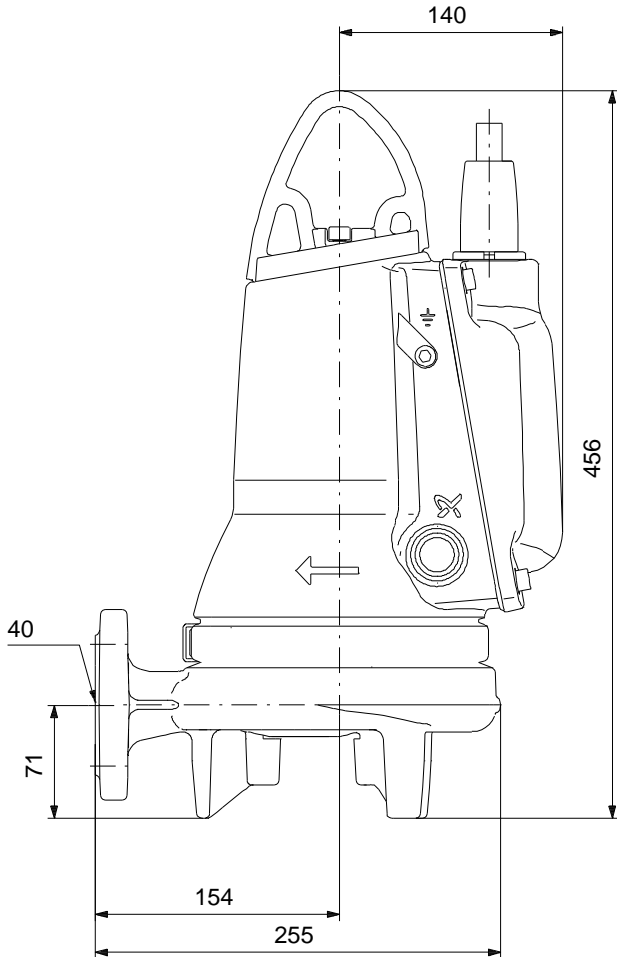
Note! All units are in [mm] unless others are stated.
Disclaimer: This simplified dimensional drawing does not show all details.

96878510 SEG.40.12.E.2.50B 50 Hz



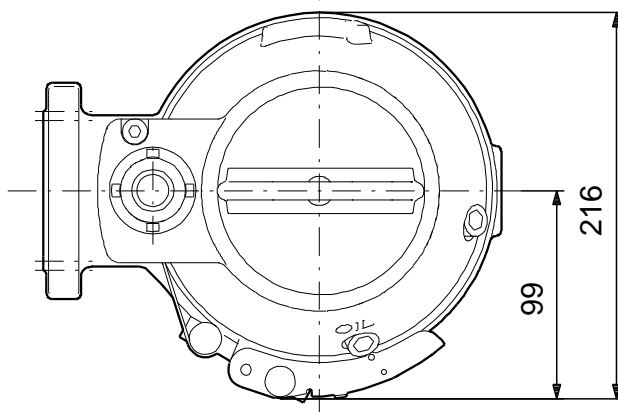
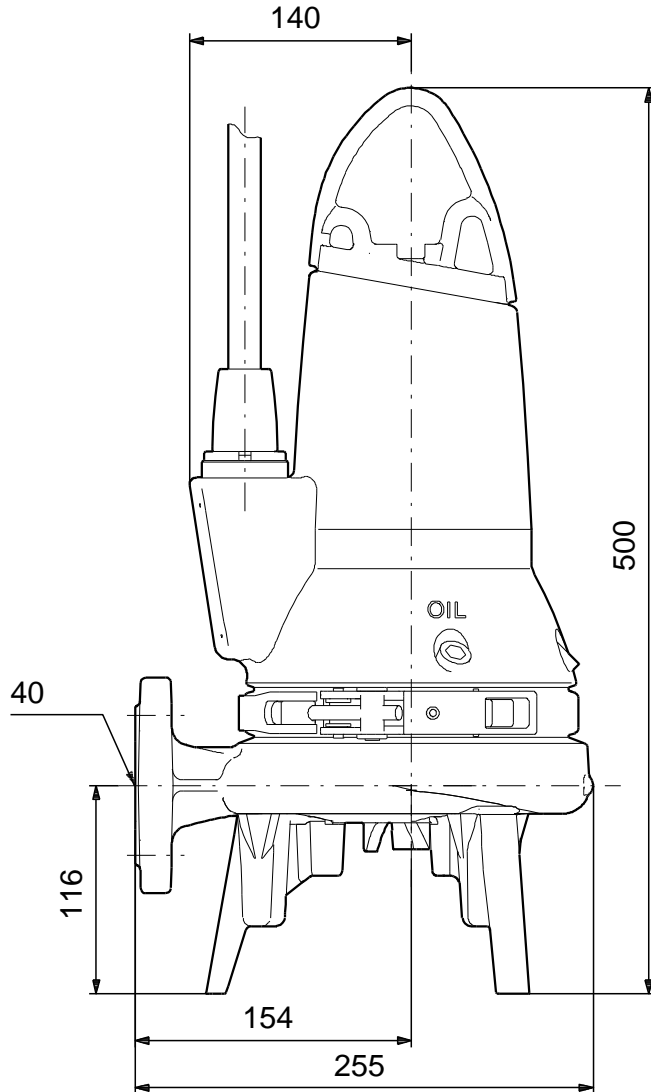
Note! All units are in [mm] unless others are stated.
Disclaimer: This simplified dimensional drawing does not show all details.

96878510 SEG.40.12.E.2.50B 50 Hz



Note! All units are in [mm] unless others are stated.
Disclaimer: This simplified dimensional drawing does not show all details.

96878510 SEG.40.12.E.2.50B 50 Hz



Note! All units are in [mm] unless others are stated.
Disclaimer: This simplified dimensional drawing does not show all details.